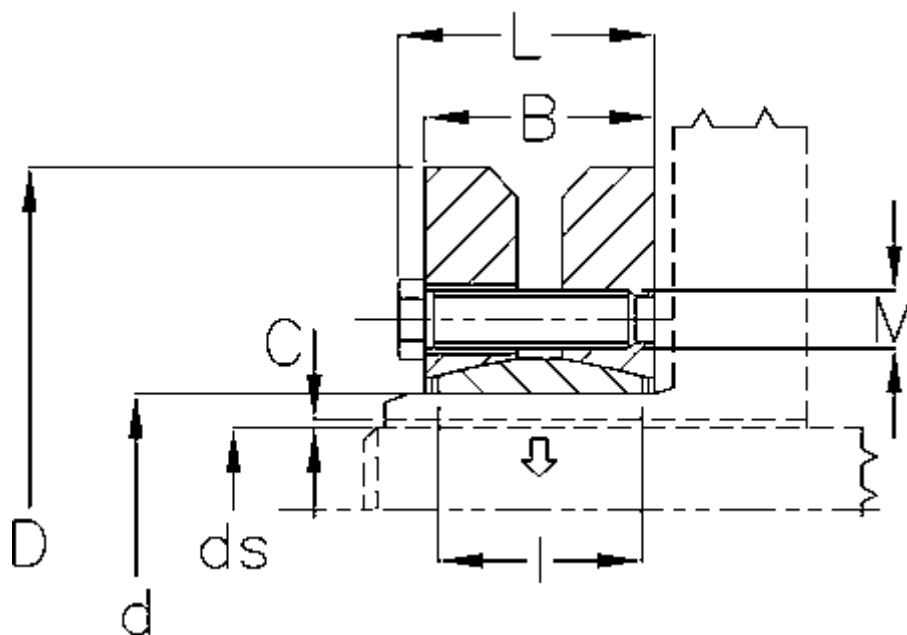


Varenummer: 438000190

Beskrivelse: Rota-fix spændelement SD 190

Mål



B mm	= 86
C maks.	= 0,090
d H8 mm	= 190
D mm	= 330
ds mm	= 140
F kN aksialkraft	= 790
L mm	= 96
l mm	= 71

M mm	= M16
T Nm drejningsmoment	= 53300
Ts Nm boltetilspændingsmoment	= 250